

ABOUT UT HEALTH SAN ANTONIO

- 5 schools with over 1,500 faculty training scientists, physicians, dentists, nurses, and other health care professionals
- Designated as a Hispanic-serving institution
- Chief catalyst for the \$37 billion biosciences and health care industry in San Antonio
- 21 different countries represented at UT Health San Antonio
- Competitive tuition for in-state students

ABOUT SAN ANTONIO

- Dynamic and multicultural city, rich in diversity
- Located at the foot of the Hill Country, home to the River Walk, Alamo, and five-time NBA World Champions, San Antonio Spurs
- 7th largest city in the United States with 300 days of sunshine per year
- Low cost of living in San Antonio
- Outdoor sculptures and artwork, art galleries, more than 25 museums, and many cultural arts festivals



Erzsebet Kokovay, Ph.D.

Program Director, Cell Systems & Anatomy
UT Health San Antonio, 7703 Floyd Curl
Drive, San Antonio, TX 78229
Phone: 210-567-5811
anatomy-biotech@uthscsa.edu



uthscsa.edu/csa/grad-ms.asp

CELL SYSTEMS & ANATOMY

MASTER OF SCIENCE PROGRAM
BIOTECHNOLOGY TRACK



 **UT Health**
San Antonio
Graduate School of
Biomedical Sciences

OVERVIEW OF PROGRAM

The Graduate Program in Cell Systems & Anatomy provides a rewarding opportunity for students wishing to pursue a Master's Degree in preparation for a fulfilling career in biomedicine. Our program has two tracks: an Anatomical Sciences Track and a Biotechnology Track. Students may select either track to obtain their Master's degree. A minimum of 30 semester hours of graduate credit is required for the Master's degree.

The Biotechnology track offers in-depth coursework on Eucaryotic Cell Biology and Molecular Biology, Introduction to Research, Methods in Cell Biology, Experimental Design and Data Analysis, and Rigor and Reproducibility in Research. Discussion of journal articles and presentation of posters at departmental retreats offer more opportunities for enhancing critical thinking and presentation skills.

Students are also required to complete research rotations in at least two different laboratories and select a primary mentor from the department for supervising their thesis project.

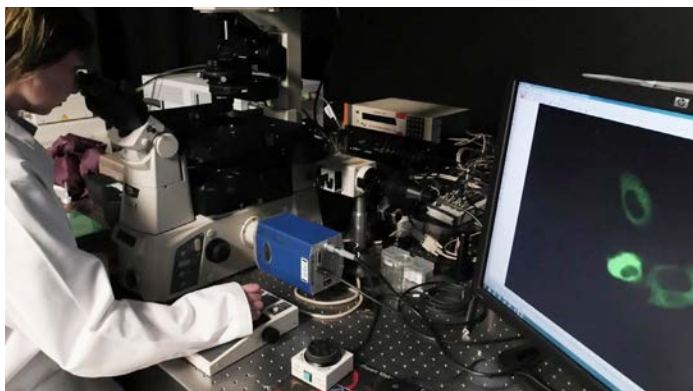
ADMISSION REQUIREMENTS

- A baccalaureate degree in a natural science, biomedical engineering, and/or any other relevant discipline from an accredited institution in the United States or proof of an equivalent degree from a foreign institution is required.
- A cumulative grade point average (GPA) no lower than "B" (3.0 on a scale of 4.0) on undergraduate-level studies undertaken previously is required.



BIOTECHNOLOGY TRACK

- Cutting-edge research training available, including Next-Gen sequencing, computational biology (bioinformatics) and optical imaging *in vitro* and *in vivo*
- Faculty with state-of-the-art laboratories conducting exciting basic science and translational research in Aging, Cancer Biology, Cell & Organelle Biology, DNA Repair and Mutagenesis, Neurobiology and Stem Cells
- Highly acclaimed teaching faculty with many awards including the prestigious Piper Professorships, UT System Regents Outstanding Teaching Awards, and UT Health San Antonio Presidential Teaching Excellence Awards
- Many of our alumni working at major biotech/pharma companies or academic institutions



"The Biotechnology track provided me with all the tools I needed to get into medical research. By using cutting edge science, we can develop new tools to study, diagnose, and treat difficult diseases."

- Michael H. Nipper
Student, Master of Science in Cell Systems & Anatomy

FACULTY

Bai, Yidong, Ph.D.	Oyajobi, Babatunde O., M.B., B.S., M.B.A., Ph.D.
Bartanuszova, Maria, M.D.	Penalva, Luiz Otavio F., Ph.D.
Bishop, Alexander, D.Phil.	Rahimi, Omid B., Ph.D.
Chen, Lizhen, Ph.D.	Ran, Qitao, Ph.D.
Dobrowolski, Radek, Ph.D.	Rao, Manjeet K., Ph.D.
Dong, Lily Q., Ph.D.	Reiter, Russel J., Ph.D.
Frost, Bess, Ph.D.	Rodriguez, Karl, Ph.D.
Habib, Samy L., M.S., Ph.D.	Ryu, Jiyeon, Ph.D.
Johnson, Linda Y., Ph.D.	Sakaguchi, Alan Y., Ph.D.
Kar, Rekha, Ph.D.	Seyfer, Alan., M.D.
King, Thomas S., Ph.D.	Sharma, Ramaswamy, Ph.D.
Kokovay, Erzsebet, Ph.D.	Subbarayulu, Panneerdoss, Ph.D.
Kraig, Ellen, Ph.D.	Sun, LuZhe, Ph.D.
Larsen, Pamela L., Ph.D.	Vogel, Kristine S., Ph.D.
Leach, Robin J., Ph.D.	Walter, Christi A., Ph.D.
Lechleiter, James D., Ph.D.	Wang, Exing, Ph.D.
Marciniak, Robert, M.D., Ph.D.	Wang, Pei, Ph.D.
Nation, Haley, Ph.D.	Zare, Habil, Ph.D.
Occhialini, Annette, M.D.	

You can find more information about each faculty member by going to:

uthscsa.edu/csa/faculty.asp

